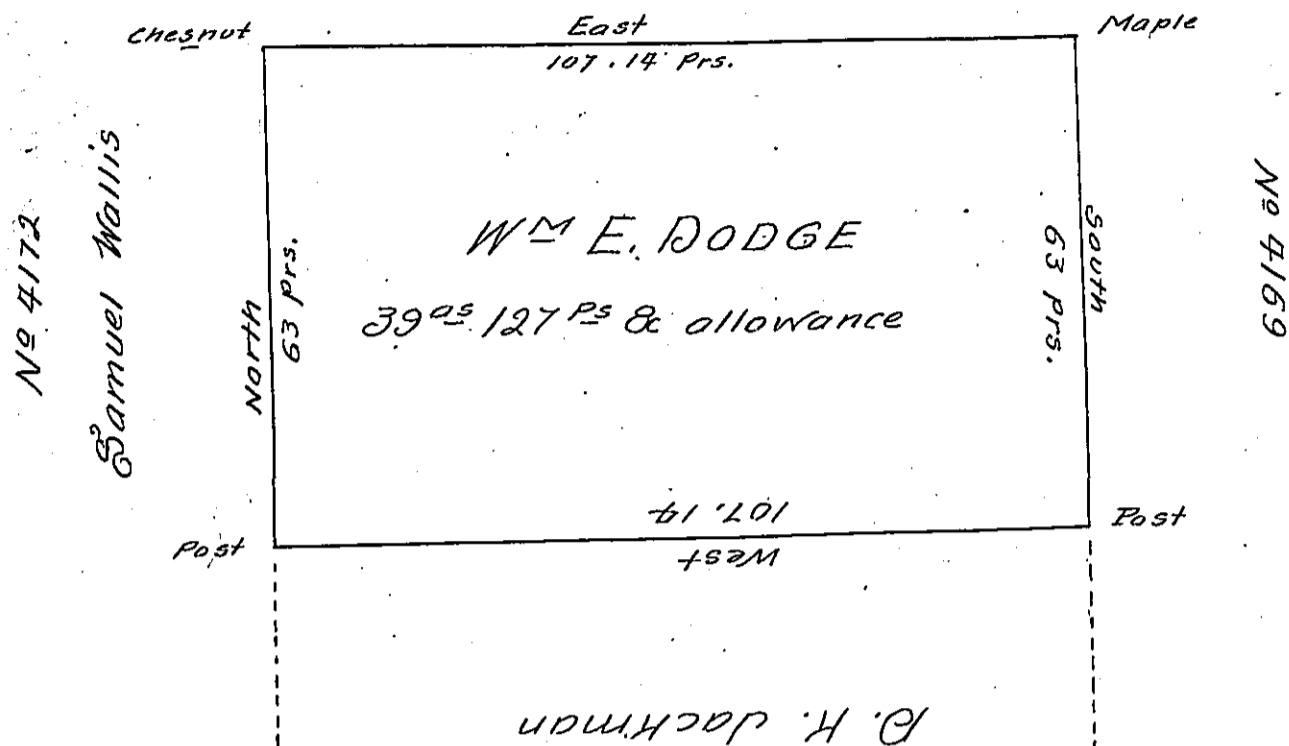


No 4169

Samuel Wallis



Draft of a Tract of Land Situate in Grade Township Cameron
 (~~formerly Clinton~~) County Surveyed the 6th day of September A.D. 1862
 for W^m E. Dodge in pursuance of his warrant dated September -
 the 2^d 1862 and containing thirty nine acres one hundred & twe-
 nty seven perches & allowance

Edward Vosburg
 County Surveyor

To Henry Souther Esq.
 Surveyor General

IN TESTIMONY that the above is a copy of the original remaining on file in
 the Department of Internal Affairs of Pennsylvania, made
 conformably to an Act of Assembly approved the 16th day of
 February, 1833, I have hereunto set my Hand and caused
 the Seal of said Department to be affixed at Harrisburg,
 this twenty-second day of June 1904

George D. B...
 Secretary of Internal Affairs.